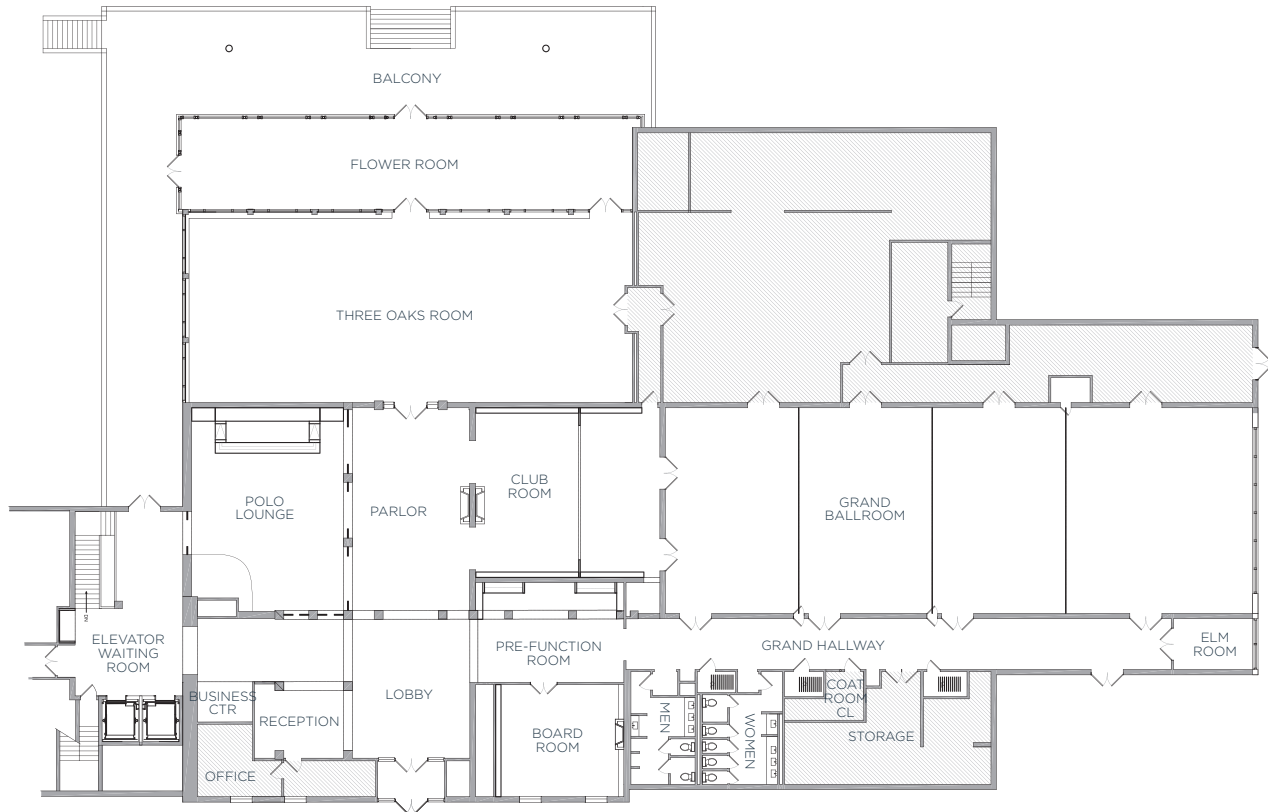


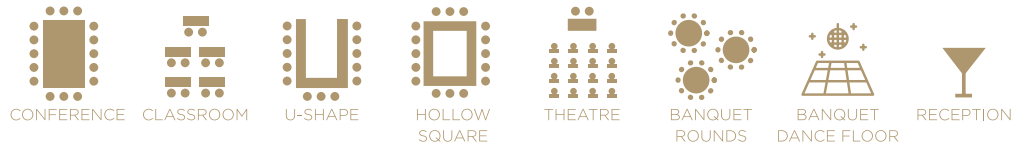


THE  
**DRAKE**  
OAK BROOK

**FLOOR PLAN**



**CAPACITY CHART**



	CONFERENCE	CLASSROOM	U-SHAPE	HOLLOW SQUARE	THEATRE	BANQUET ROUNDS	BANQUET DANCE FLOOR	RECEPTION
THE BALLROOM 3770 SQ FT	110	250	76	80	660	340	320	500
THREE OAKS BALLROOM 2852 SQ FT	84	160	56	60	450	200	170	360
FLOWER ROOM 1402 SQ FT	84	90	54	56	260	110	-	170
THREE OAKS/FLOWER ROOM 4254 SQ FT	84	-	-	-	-	300	260	530
THE NAGLE ROOM <small>Can be divided into 4 separate rooms</small> 2730 SQ FT	70	130	62	64	310	160	140	340
GINO DIRENZO BOARDROOM 528 SQ FT	13	-	-	-	-	-	-	-
ELM ROOM 150 SQ FT	6	-	-	-	-	-	-	-
THE COLONIAL ROOM 1126 SQ FT	-	-	-	-	-	-	-	125
SINATRA ROOM 775 SQ FT	-	-	-	-	-	-	-	70